

# EAGLE LODGE

---

Wentworth • Surrey







## Award Winning Wentworth Mansion

Impressive double height reception hall  
Drawing room • Dining room • Sitting room  
Study • Family room • Kitchen / breakfast room  
Utility room • Garden room  
Indoor swimming pool • Gym • Changing room

Master bedroom suite with dressing room,  
bathroom and balcony  
4 further bedroom suites

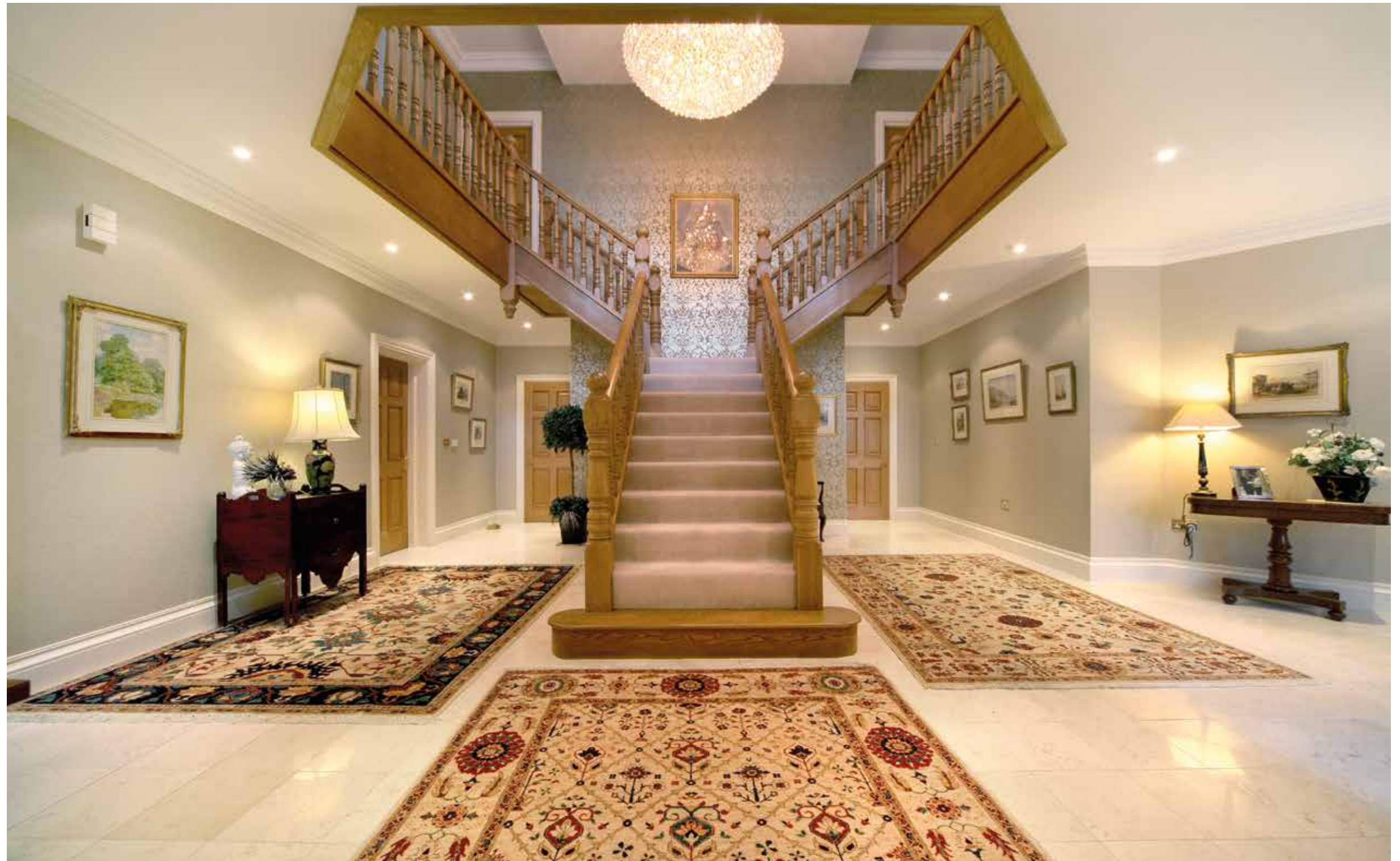
3 Car Garage • Studio flat / home office

Approximate total gross internal area  
961 sq m / (10,344 sq ft)

Set in approximately 0.88 acres (0.36 hectares)

### TENURE

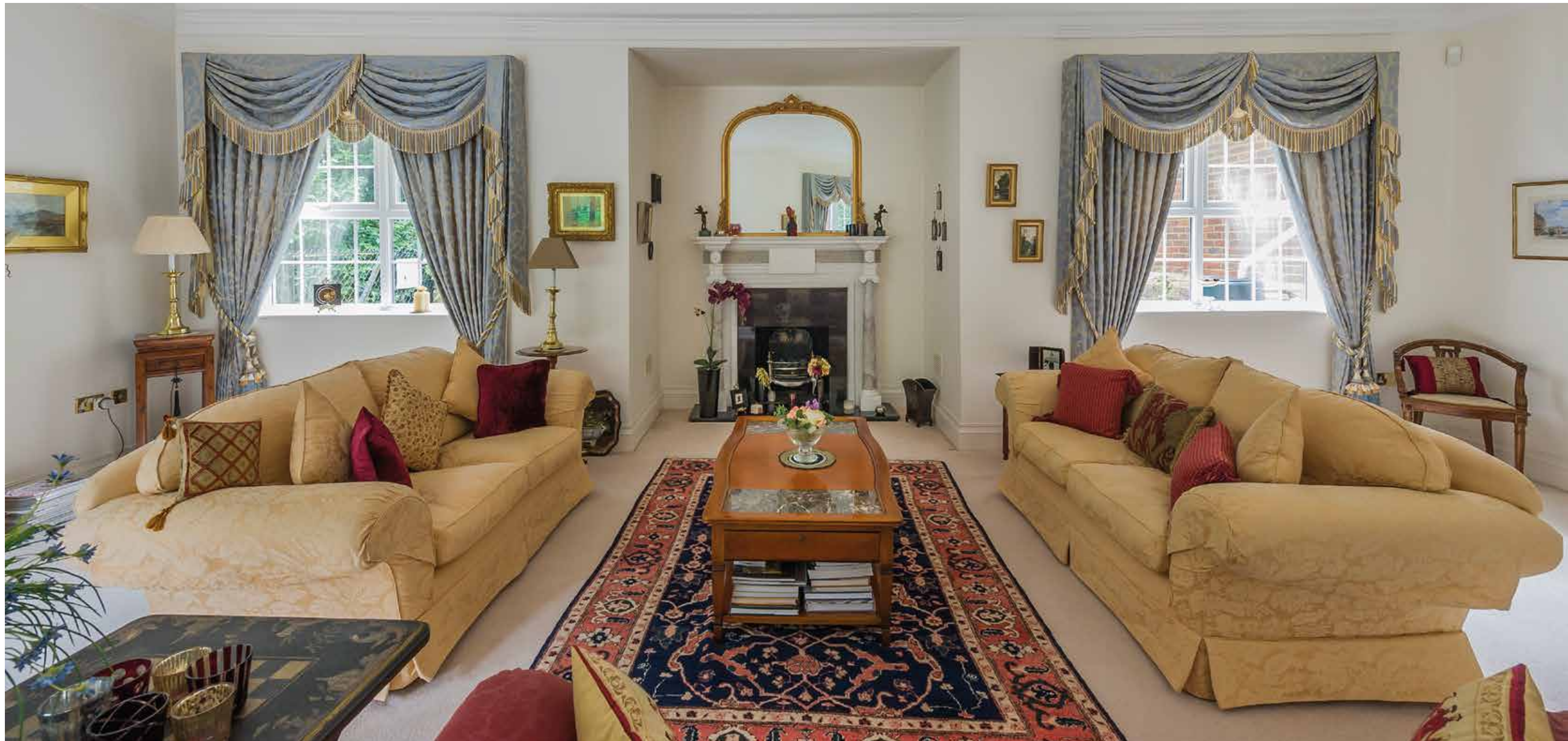
Freehold

























Eagle Lodge • Wentworth

Gross internal area = 10,344 sq ft / 961 sq m



- Reception Rooms/General Living & Circulation Areas
- Work Rooms i.e. Kitchen/Workshop/Utility/Plant
- Bedroom/Dressing Rooms
- Bathrooms
- Storage
- Swimming Pool



Second Floor



First Floor



FOR ILLUSTRATIVE PURPOSES ONLY NOT TO SCALE

This plan is a reproduction of existing drawings and is for guidance only. It must not be relied upon as a statement of fact.

















## LOCATION

Eagle Lodge is located on Wellington Avenue on the world famous Wentworth Estate.

The tranquil Wentworth Estate is probably the best country address within close proximity to London. Favoured by some of the world's most influential families as a place to relax and unwind, within 21 miles from central London and 7.5 miles to London Heathrow (Terminal 5).

Wentworth boasts three championship golf courses and the Wentworth Club benefits from swimming pools, restaurants, tennis courts and a leisure / health club.

Wentworth is perfectly situated close to both Ascot and Windsor racecourses.

Polo is at Smith's Lawn in Windsor Great Park and Royal County of Berkshire Polo Club at Winkfield.

Schools in the area are exceptional – Eton College, Harrow, Papplewick, Sunningdale, St. Mary's, Hurst Lodge, St. George's, St. John's Beaumont, TASIS and ACS Egham.

Northolt Private Airport (20 miles), Wentworth Golf Course and Wentworth Club House







# HANOVER

— private office —

Alex Newall

Managing Director

**T:** + 44 (0)20 7935 5797

**M:** + 44 (0)7884 262 774

**E:** alex.newall@hanoverprivateoffice.com

Fred Richardson

Director

**T:** + 44 (0) 207 935 5797

**M:** + 44 (0) 7880 738 484

**E:** fred.richardson@hanoverprivateoffice.com



Paul Finnegan

Savills Country Department

**T:** +44 (0)20 7409 8877

**M:** +44 (0)7967 555 513

**E:** PFinnegan@savills.com

Daniel Burstow

Savills Sunningdale

**T:** +44 (0)1344 626 162

**M:** +44 (0)7870 999 586

**E:** DBurstow@savills.com

## IMPORTANT NOTICE

1. Particulars: These particulars are not an offer or contract, nor part of one. You should not rely on statements by Hanover Private Office in the particulars or by word of mouth or in writing ("information") as being factually accurate about the property, its condition or its value. Neither Hanover Private Office nor any joint agent has any authority to make any representations about the property, and accordingly any information given is entirely without responsibility on the part of the agents, seller(s) or lessor(s).
2. Photos etc: The photographs show only certain parts of the property as they appeared at the time they were taken. Areas, measurements and distances given are approximate only.
3. Regulations etc: Any reference to alterations to, or use of, any part of the property does not mean that any necessary planning, building regulations or other consent has been obtained. A buyer or lessee must find out by inspection or in other ways that these matters have been properly dealt with and that all information is correct.
4. VAT: The VAT position relating to the property may change without notice. Hanover Private Office is a limited company registered in England with registered number 05239519 Our registered office is 8 Broadstone Place, London W1U 7EP, where you may look at a list of directors names



# HANOVER

— *private office* —

